

| | Standard | Result |
|--|---|---|
| Size | | 1211.2 mm x 169.8 mm |
| Thickness | ISO 24346 | 4.5 mm |
| Wear layer | ISO 24340 | 0.3 mm |
| Locking mechanism¹ | | 2G™ angling installation system |
| Surface treatment | | PU coating |
| Guarantee² | Residential | 20 years |
| Bevelled edge | | No |
| Mass per unit area | ISO 23997 | 6575 g/m ² |
| Standards | EN 16511 | Pass (Multilayer modular floorcovering panels) |
| Classification | ISO 10874 - Domestic | 23: Domestic heavy |
| Reaction to fire | EN 13501-1 | Bfl-s1 |
| Staining resistance | EN 438-2 | Pass (Grade 5) |
| Light fastness | EN ISO 105-B02 | Pass (≥ 6) |
| Abrasion resistance | EN 13329 Annex E | Pass (>1200 cycles) |
| Furniture chair leg | EN 424 | Pass (No visible damage) |
| Dimensional stability | BS EN ISO 23999 | Pass (< 0.25%) |
| Swelling | ISO 24336 | Pass (0.2%) |
| Acoustic impact noise reduction | EN ISO 10140-1:2016 | ΔL _w = 19 dB |
| Indentation - residual | ISO 24343-1 | Pass (≤ 0.1 mm) |
| Impact resistance | EN 13329 Annex F | Pass (> 1800 mm) |
| Thermal resistance | ISO 8302 | 0.052 m ² K/W Suitable for underfloor heating. Max 27°C |
| Slip resistance³ | EN 13893 DIN 51130 | DS R9 |
| Light Reflectance Value (LRV) | BS 8493:2008+A1:2010 | See separate table |
| Adhesive | | None required, Please install according to our installation instructions. |
| Environmental | Indoor Air Comfort Floorscore SCS-EC10.3-2014 v4.0 ISO 14001 / ISO 9001 | Gold certification; Compliant low emitting VOC emissions. Indoor air quality certified; Compliant low emitting VOC emissions. Manufactured to quality and environment management systems standard |
| Recycling | | Suitable |
| Phthalate free | | Yes |

¹ 2G™ is a patented technology invented by Välinge Innovation AB. The 2G™ word mark and logo are registered trademarks owned by Välinge Innovation AB and any use of such marks is under license.

² Subject to terms. Please see our website.

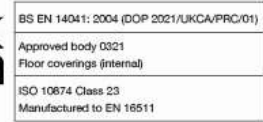
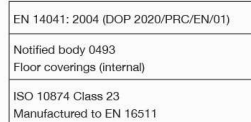
³ Slip resistance is measured on freestanding ex-factory product. Slip resistance can be affected by many factors, including but not limited to; product installation and underlayment, surface contamination, use, wear and how the product is maintained. Textural variation along the surface of the product can affect nominal values.

For more information:

UK: 01386 820110 | ROI: 01 6569887

Email: info@palioflooring.com

Visit: www.palioflooring.com



| Product Code | Size | | Box Quantity | | Slip Resistance | LRV |
|--------------|----------------|----------------|----------------|-----------|-----------------|-----|
| | mm | inches | m ² | Pieces | DIN 51130 | |
| PVP142-SCB | 1211.2 x 169.8 | 47.69" x 6.69" | 2.468 | 12 Planks | R9 | 26 |
| PVP143-SCB | 1211.2 x 169.8 | 47.69" x 6.69" | 2.468 | 12 Planks | R9 | 20 |
| PVP144-SCB | 1211.2 x 169.8 | 47.69" x 6.69" | 2.468 | 12 Planks | R9 | 34 |
| PVP145-SCB | 1211.2 x 169.8 | 47.69" x 6.69" | 2.468 | 12 Planks | R9 | 27 |
| PVP146-SCB | 1211.2 x 169.8 | 47.69" x 6.69" | 2.468 | 12 Planks | R9 | 27 |
| PVP147-SCB | 1211.2 x 169.8 | 47.69" x 6.69" | 2.468 | 12 Planks | R9 | 38 |
| PVP148-SCB | 1211.2 x 169.8 | 47.69" x 6.69" | 2.468 | 12 Planks | R9 | 21 |
| PVP149-SCB | 1211.2 x 169.8 | 47.69" x 6.69" | 2.468 | 12 Planks | R9 | 46 |
| PVP150-SCB | 1211.2 x 169.8 | 47.69" x 6.69" | 2.468 | 12 Planks | R9 | 25 |
| PVP152-SCB | 1211.2 x 169.8 | 47.69" x 6.69" | 2.468 | 12 Planks | R9 | 35 |
| PVP153-SCB | 1211.2 x 169.8 | 47.69" x 6.69" | 2.468 | 12 Planks | R9 | 32 |
| PVP156-SCB | 1211.2 x 169.8 | 47.69" x 6.69" | 2.468 | 12 Planks | R9 | 34 |
| PVP157-SCB | 1211.2 x 169.8 | 47.69" x 6.69" | 2.468 | 12 Planks | R9 | 42 |
| PVP161-SCB | 1211.2 x 169.8 | 47.69" x 6.69" | 2.468 | 12 Planks | R9 | 52 |

Wood Designs